

PATIENT PROTOCOLS



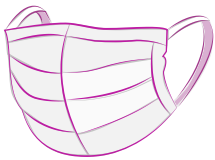
COME ALONE

Please attend alone at your designated appointment time. If you require a chaperone, please advise reception so they can make necessary arrangements.



PERSONAL BELONGINGS

Please only bring with you the bare essentials. No shopping bags or unwanted items. During operative treatments patients are required to store personal items outside of the clinical rooms in containers provided. We do not accept responsibility or liability for personal items lost or damaged whilst at the practice.



PATIENT PPE

All patients are required to attend with face coverings. If you are unable to provide your own, please advise our team on bookings and one will be provided for you.



CALL AND WAIT FOR YOUR GREETER

When you arrive, park or wait somewhere safely and call us. One of our team will let you know when to enter the practice and will be ready at the front door to greet you personally.



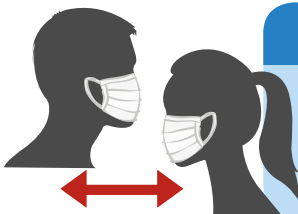
TEMPERATURE CHECK

Our team will take your temperature on arrival with a contactless thermometer to ensure it is safe for you to enter.



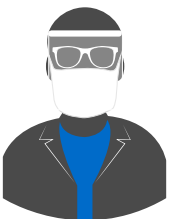
HAND SANITISER

Contactless hand sanitisers are available throughout our practice. **Patients are required to use these on entering and exiting the building.**



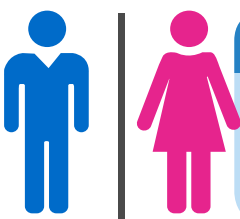
SOCIAL DISTANCE IN THE PRACTICE

Please follow current social distancing guidelines whilst in our practice and on entry and exit. Some of our patients may be vulnerable and we appreciate your effort to help keep everyone safe.



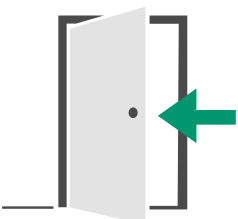
CLINICAL TREATMENT

Our dentists will carry out your treatments with enhanced PPE and protocols to keep everyone as safe as possible. Our masks and outfits may have changed, but we are still the same friendly faces as always.



PATIENT TOILET USE

Patients are required to request access to use toilets. Following patient use, our team will complete additional cleaning procedures. Please plan your visit and use home or other facilities prior to visits where possible.



END OF TREATMENT & LEAVING THE PRACTICE

One of our team will escort you out of the building or let you know when it is safe to do so. This will help reduce patient interactions whilst at the practice.